

# MarSurf



**New.** MarSurf XC 10  
"Quick & Easy" Contour Measurement

|  
- 0 +

**Mahr**

EXACTLY

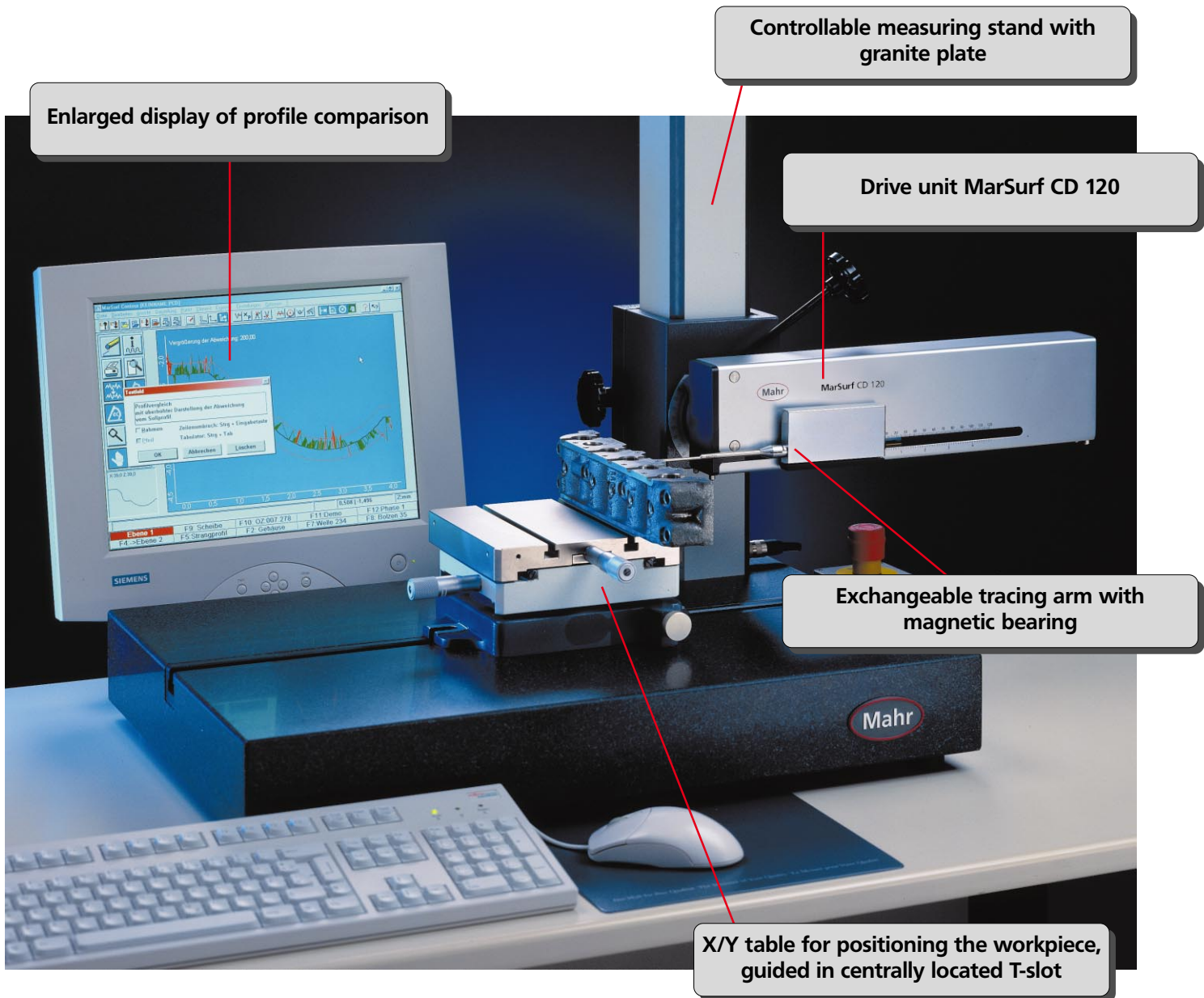
# Contour Measurement Made Easy With MarSurf XC 10

This measuring system is a successful combination of easy operation and high performance.

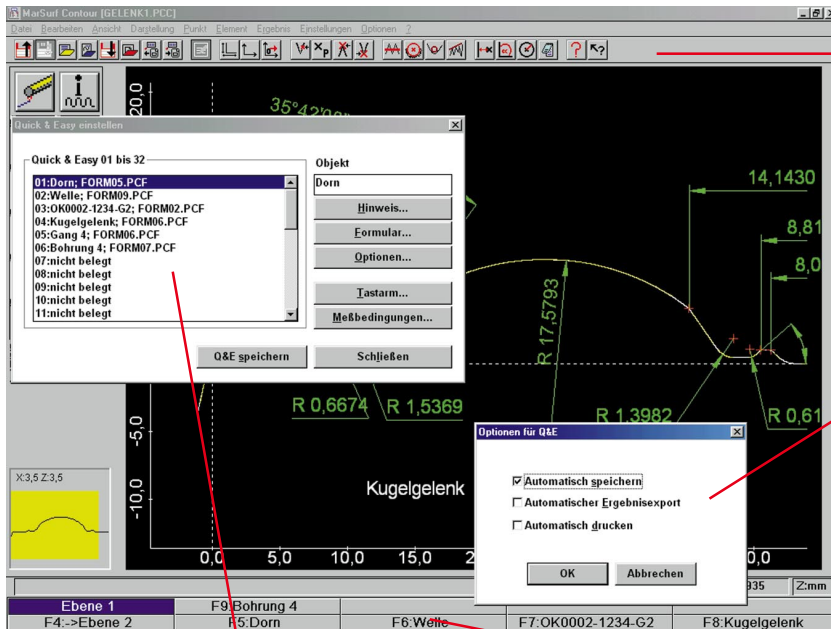
For the **MarSurf XC 10**, Mahr has used its proven experiences with users' interests and problems to develop a high-performance contour measuring station that is inexpensive and easy to operate.

The **MarSurf CD 120 drive unit** and the measuring stand are controlled and positioned in a convenient measuring station view by means of the "MarSurf XC 10" measuring and evaluation software.

- Profile display and evaluation in one view
- 32 "Quick & Easy" measuring programs with user definable names
- Programmable function keys allow easy access to selecting and starting programs
- 32 nominal profiles can be stored and are easily called up
- 10 prepared forms with customer company logo can be selected
- Zooming of deviations from the nominal profile
- Advantages of the CD 120 drive unit, e.g., no operating controls on the unit, patented magnetic tracing arm support
- Compensation for radius and form deviation of the stylus tip
- Password protection for user authorization.



# The user interface can be adapted easily by the user to his own requirements



Hide the menu bar and avoid operating errors

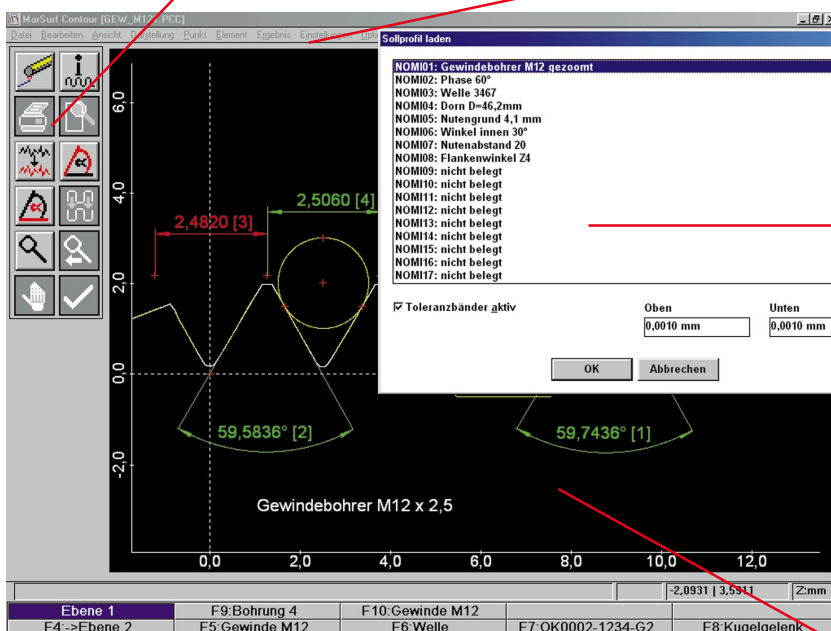
Automatic functions are easily switched on and off

Quick & Easy measuring programs contain all the necessary settings

Quick and Easy measuring programs are started via function keys

Free design of the toolbox with the 12 most frequently required functions

Toolbar can be switched off to concentrate on the primary functions



32 nominal profiles can be stored under any name you want, and can later be recalled for post evaluation

Evaluation window gives a clear overview when displaying the results

For every measuring task, prepared records can be selected, into which the customer's company logo can be integrated. The measuring tasks are created via Quick & Easy, and started simply by pressing one of the function keys.

Depending on the measuring task, tracing arm units specific for the application can be attached to the **MarSurf CD 120** drive unit by means of a patented magnetic bearing.

The **basic instrumentation** includes two specially selected tracing arm units, which can be used for the most frequent applications. In the simplest case, tasks for these applications include:

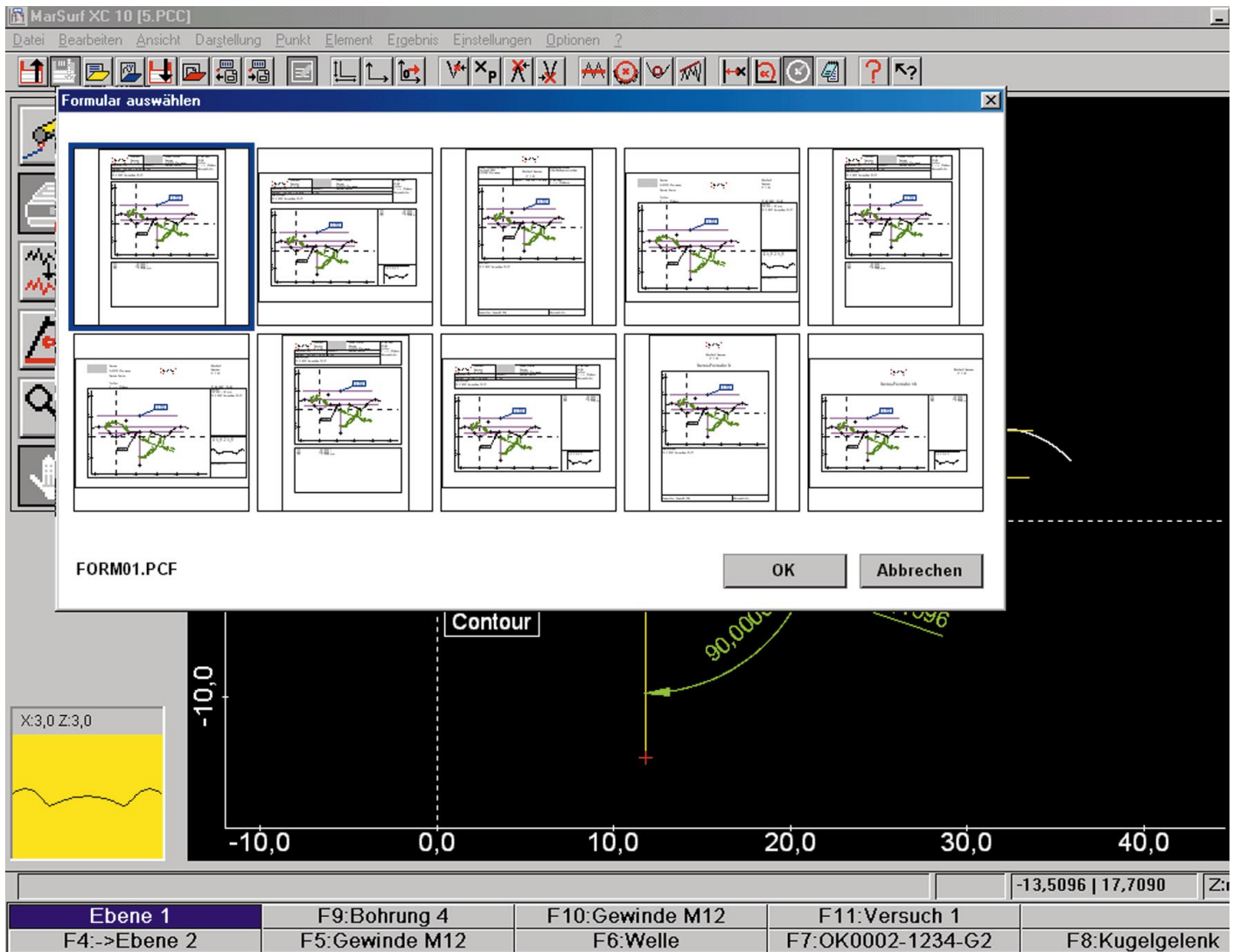
- Measurement of freely accessible outside contours with a maximum height in Z of 50 mm (1.97 in) and length in X of 120 mm (4.72 in)
- Measurement of inside contours starting at a diameter of 8 mm (.32 in) with a maximum length of 90 mm (3.54 in)

Tasks such as

- Measurement of internal teeth via a tracing arm cranked to one side or
- Determination of inside contours in small bores starting at 2 mm (.079 in)

can also be performed.

For each tracing arm unit there is a corresponding calibration file. This makes re-calibration after changing tracing arms unnecessary. There are menu-driven procedures to calibrate the tracing arm geometry, and calibration programs for high-precision measurements.



### Mahr GmbH Göttingen

P.O. Box 1853, D-37008 Goettingen; Brauweg 38, D-37073 Goettingen  
Phone +49-551-7073-800, Fax +49-551-7073-888, E-mail: info@mahr.de

© by Mahr GmbH, Göttingen

We reserve the right to make changes to our products, especially due to technical improvements and further developments. All illustrations and technical data are therefore without guarantee.