

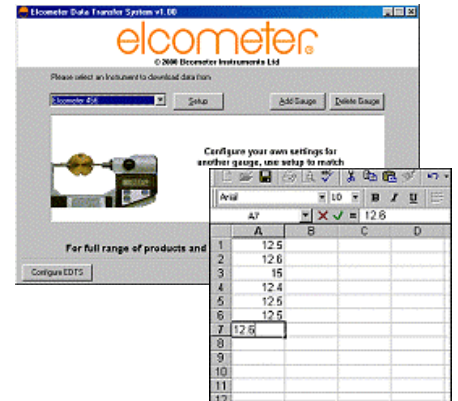
Elcometer Software

Elcometer provide a complete range of unique software packages designed for the Coatings Inspector. Our **FREE** range of software, available from the website (www.elcometer.com), allows basic level data management and report generation. Our Coating Management Software (EDCS⁺) provides the inspector with all the charts required for ISO and customer reports.

EDTS⁺ Excel[®] Link^{*}

This free software program, available from our website, allows the Coatings Inspector to insert data from ANY Elcometer gauge or any gauge with an RS232 data output, directly into Microsoft Excel[®] or other spreadsheet programs.

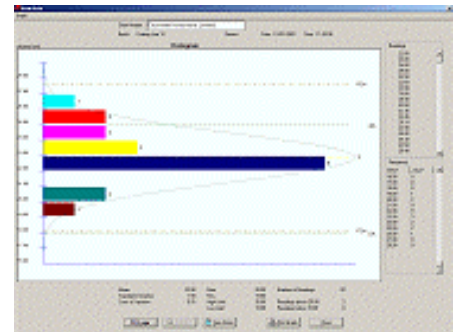
- Automatically inserts data into a spreadsheet as soon as you transmit the data.
- Generate your own charts and reports using the spreadsheet's internal graphics program.
- Free download from www.elcometer.com



EDCS WIN Collection Software^{*}

This free software package is ideal for generating simple reports for ISO and customer requirements. However, this package is designed for use with all relevant Elcometer gauges only.

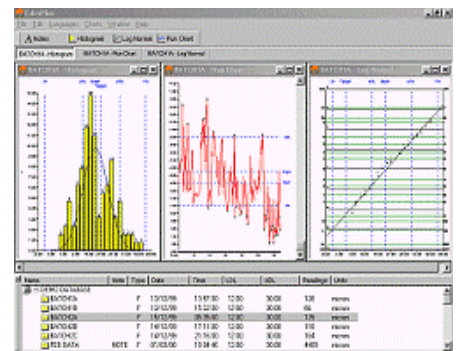
- Download data from your gauge directly to your PC.
- Manually record data from inspection sheets.
- Simple analysis software provides the user with Histogram and Log Normal Charts.
- Add inspection notes to your data.
- Free download from www.elcometer.com



EDCS⁺ Coating Management Software

EDCS⁺ takes Coating Management Software to a new level. It is a simple to use and versatile, software program that allows the inspector to produce professional inspection results and generate specialised reports to help assess your coating. Ideal for your internal quality control and provides an excellent service to your customer.

- Organise your data as you need to see it: Rename batches, set up folders for different customers, merge data from different batches, etc.
- Design your own reports to match your corporate identity: Add your company logo, include inspection photographs, include summary data, display more than one graph on the page.
- Part number, T96016488



Data Transfer Cables

To use the above software packages with Elcometer gauges, the appropriate data transfer cable is required.

T3457892-	345 to PC Connection Cable
T35511839	355 to PC Connection Cable
T45616217	456 to PC Connection Cable

* EDTS⁺ Excel[®] Link and EDCS WIN together with the appropriate PC cable is now supplied as standard with all 355 gauges and 456 Standard and Top Gauges. If EDCS⁺ is required, this should be ordered separately.